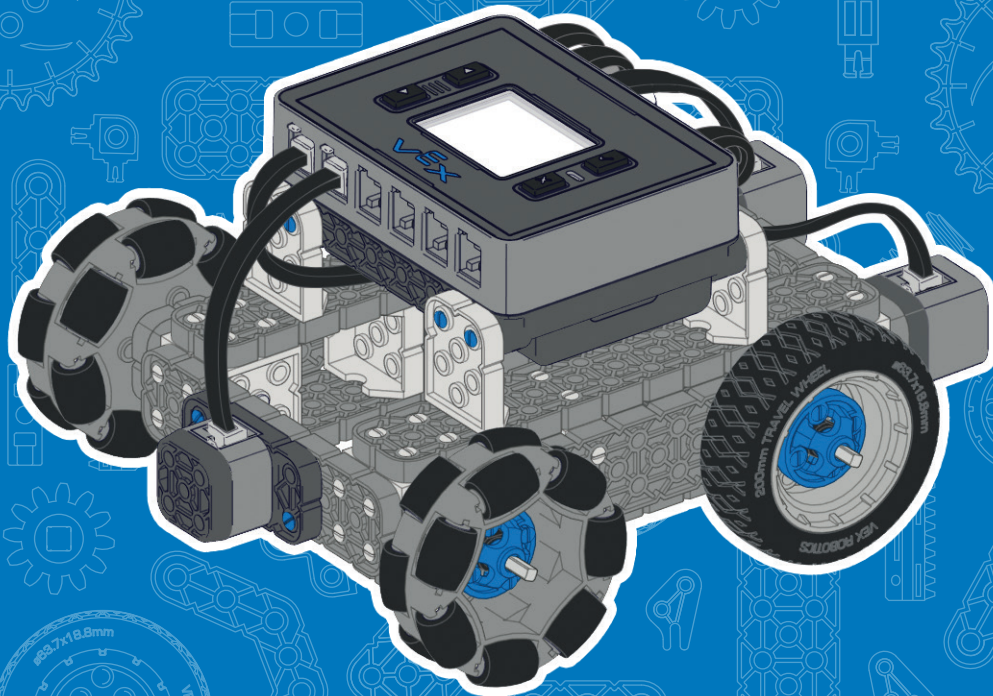


VEX IQ[®]

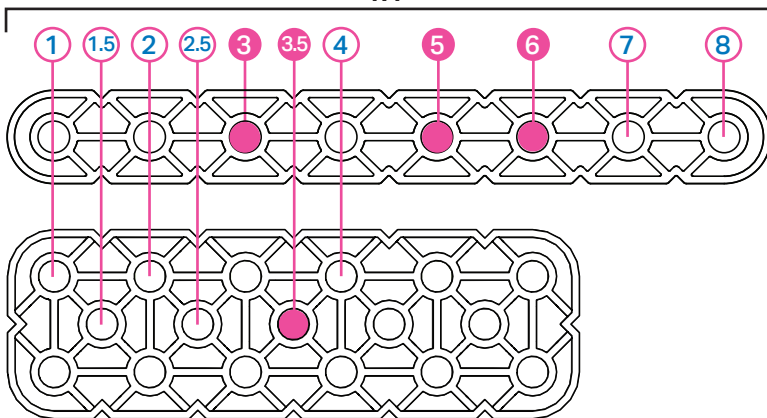
BaseBot with Sensors Build Instructions



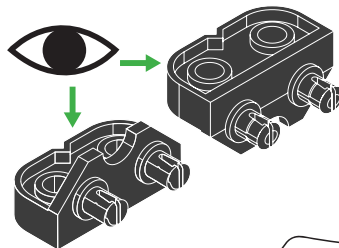
228-8899

Count before you connect • Contar antes de conectar • Compter avant de connecter • Contare i pezzi prima di collegarli • Erst zählen, dann verbinden • Policz, zanim połączysz • Tell voordat u aansluit

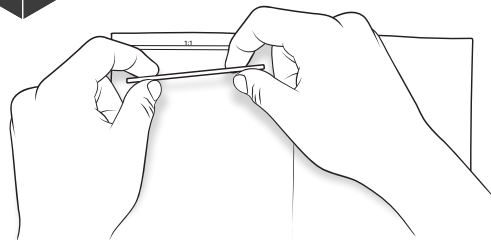
1:1



Scan to download the
VEX IQ Part Ruler PDF



Confirm orientation
Confirmar orientación
Confirmez l'orientation
Confermare l'orientamento
Ausrichtung prüfen
Potwierdź orientację
Bevestig orientatie



Check pieces against actual size in manual
Verificar partes contra tamaño real en el manual
Verifiez les pièces contre leurs tailles réelles dans le manuel
Controllare le dimensioni dei pezzi nel manuale rispetto alla grandezza naturale
Bauteile mit der originalgröße in der anleitung vergleichen
Sprawdź elementy względem rzeczywistego rozmiaru w instrukcji
Check stukken tegen de werkelijke grootte in de handmatige



Alert
Alerta
Alerte
Attenzione
Warnung
Ostrzeżenie
Waakschuwing

Correct
Correcto
Correcte
Corretto
Richtig
Prawidłowo
Correct

Pivot
Pivote
Pivot
Imperniare
Drehbar lagern
Obracać się na osi
Draaien

Incorrect
Incorrecto
Incorrecte
Non corretto
Falsch
Nieprawidłowo
Verkeerd

Alternate view
Vista alternativa
Autre vue
Vista alternativa
Andere ansicht
Widok alternatywny
Vitzicht

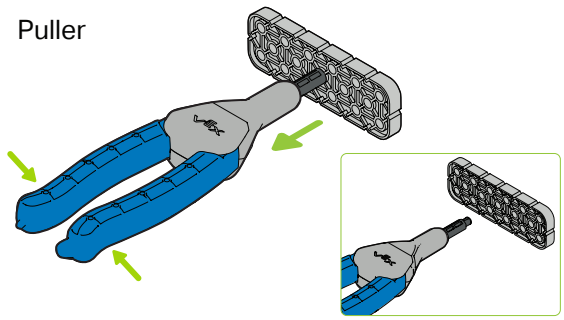
Size
Tamaño
Taille
Dimensione
Größe
Rozmiar
Grootte

Notice
Aviso
Avis
Fare attenzione
Hinweis
Zwróć uwagę
Opmerken

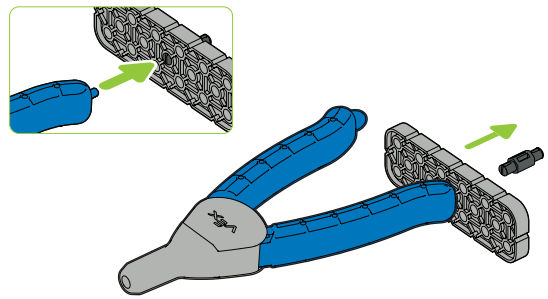
Rotate
Girar
Faire tourner
Ruotare
Drehen
Obróć
Draaien

Flip
Voltear
Retourner
Capovolgere
Umdrehen
Przerzuć
Omdraaien

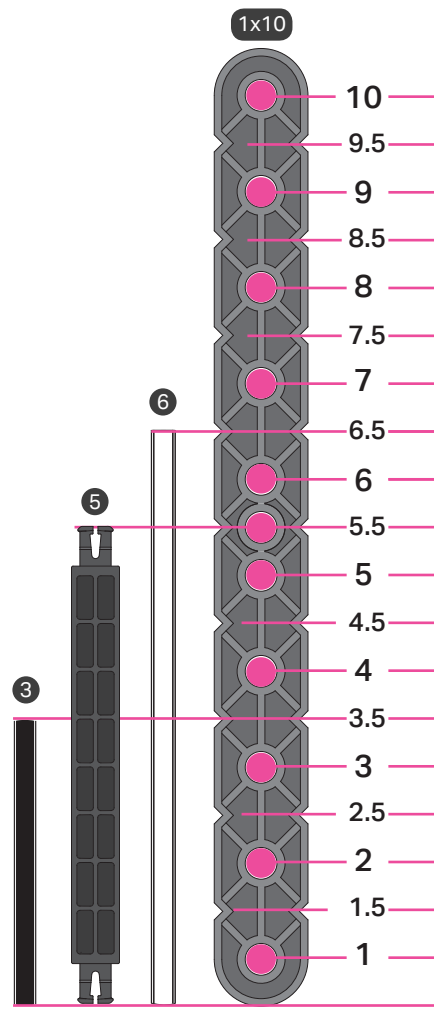
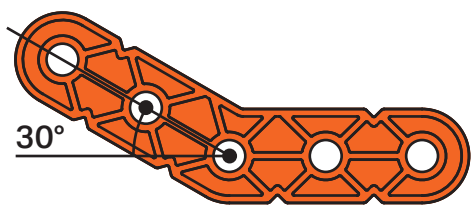
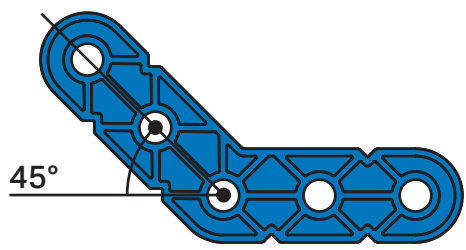
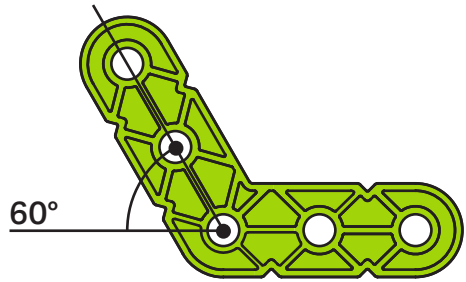
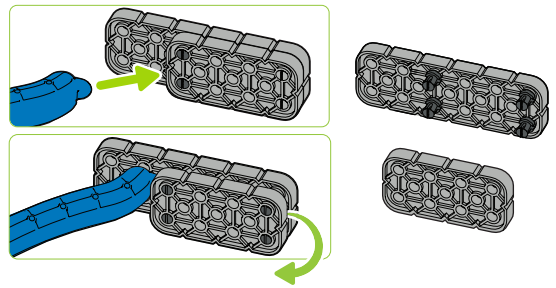
Puller



Pusher



Lever





4x

Washer



4x

Rubber Shaft Collar



4x

2x2

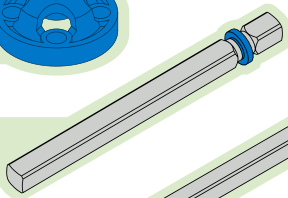
Center Offset Round Lock Beam



2x

3

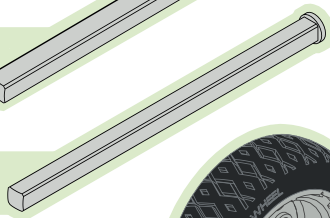
Pitch Motor Shaft



2x

5

Pitch Capped Shaft



2x

200mm

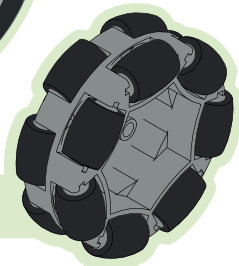
Travel Tire



2x

200mm

Travel Omni-Directional Wheel

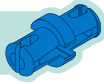




44x

1x1

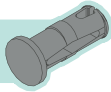
Connector Pin



12x

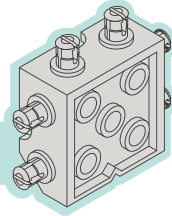
0x2

Connector Pin



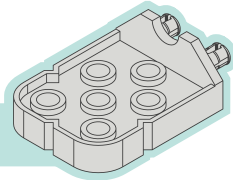
8x

Triple 2x Wide 2x2
Corner Connector



4x

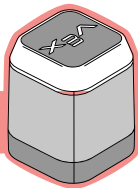
2x Wide, 2x2 Offset
Corner Connector





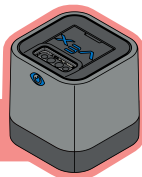
1x

Touch LED



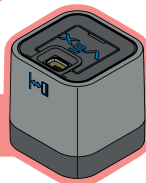
1x

Optical Sensor



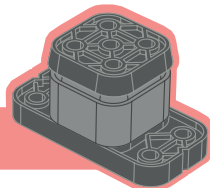
1x

Distance Sensor



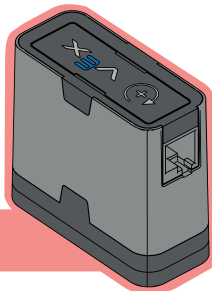
1x

Bumper Sensor



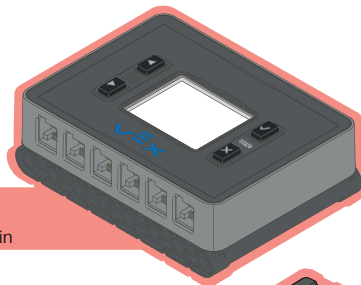
2x

Smart Motor



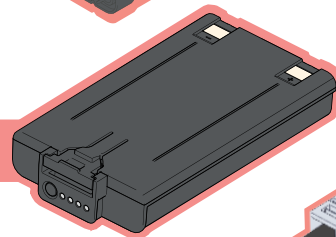
1x

Robot Brain



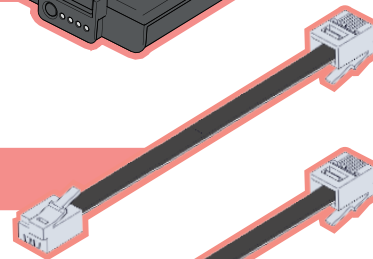
1x

Robot Battery



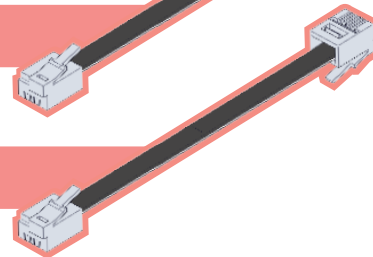
4x

200mm
Smart Cable



2x

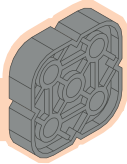
300mm
Smart Cable





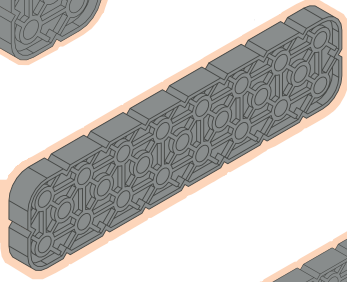
4x

2x2
Beam



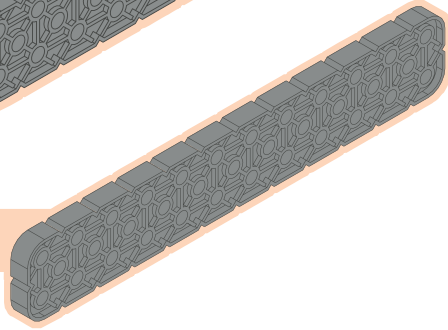
2x

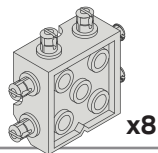
2x8
Beam



6x

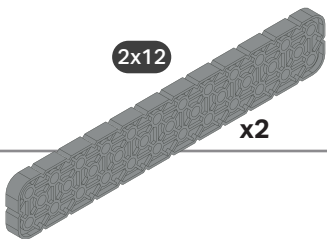
2x12
Beam





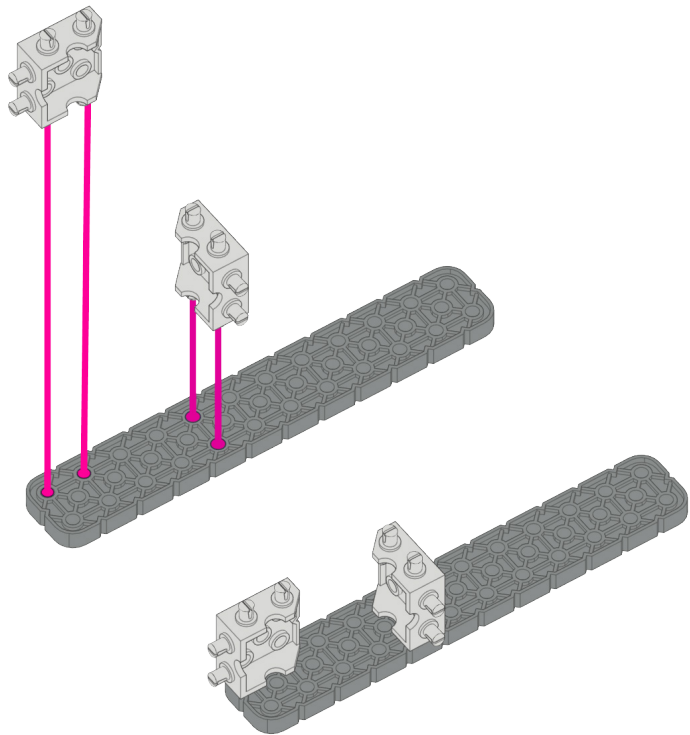
x8

2x12

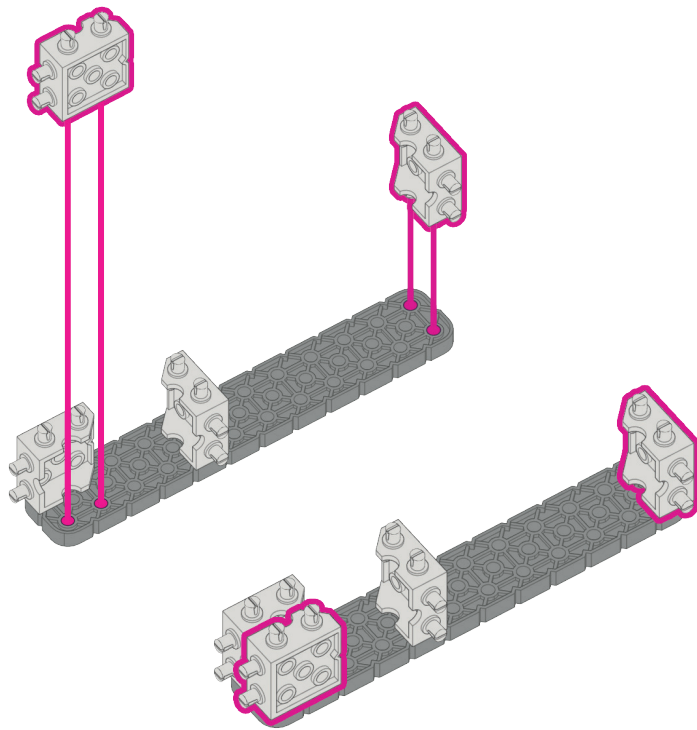


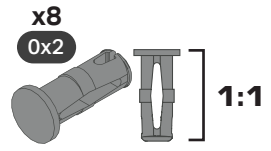
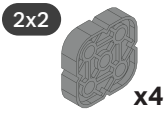
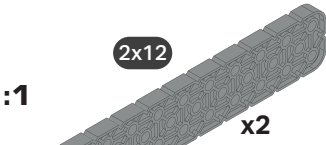
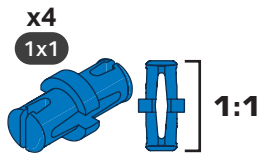
x2

1 2X

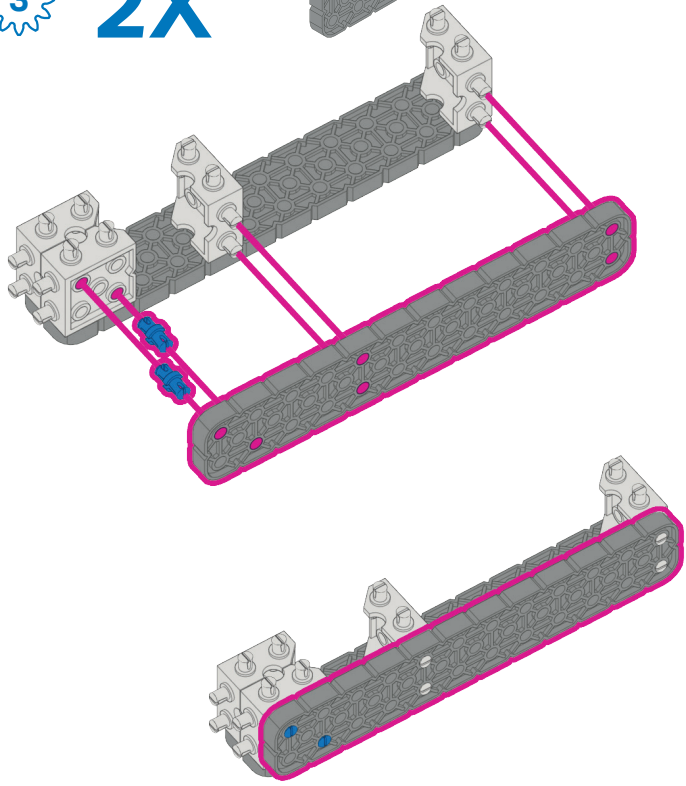


2 2X

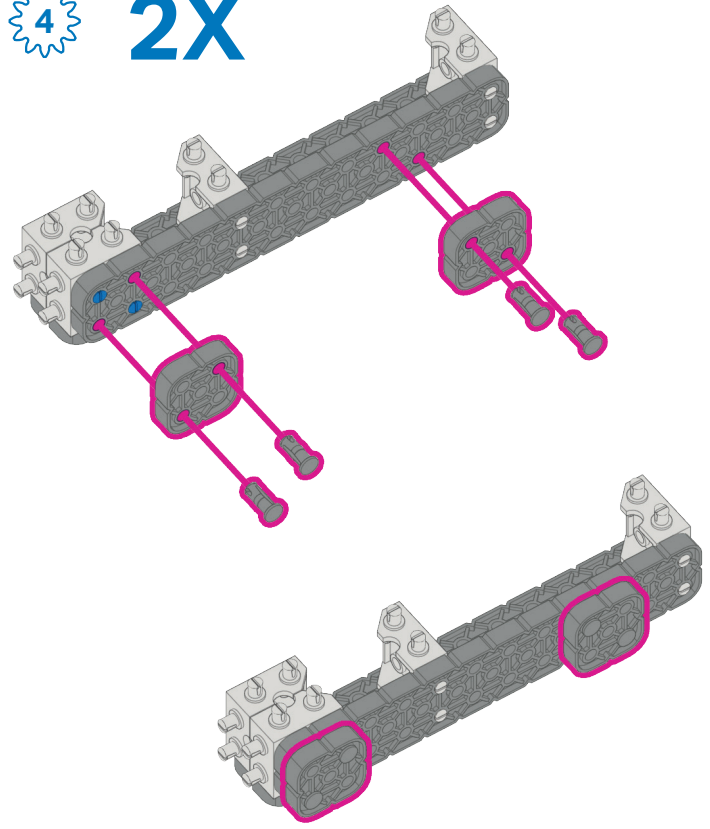


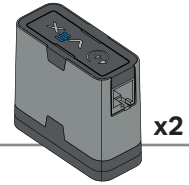
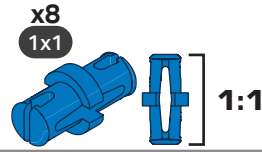
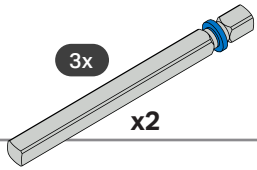


3 2X



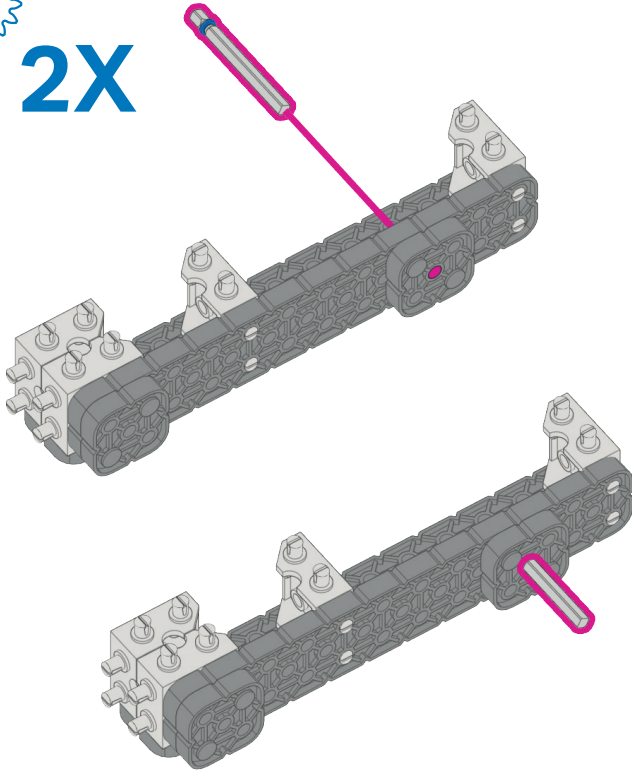
4 2X





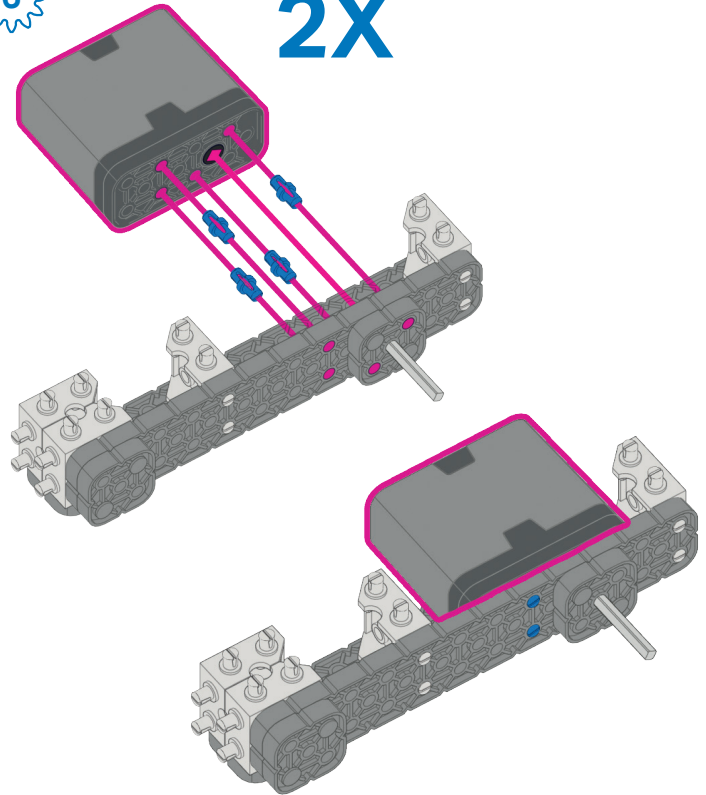
5

2X

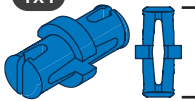


6

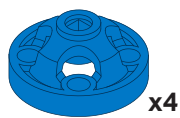
2X



x16
1x1



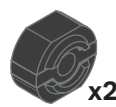
1:1



x4



x2



x2

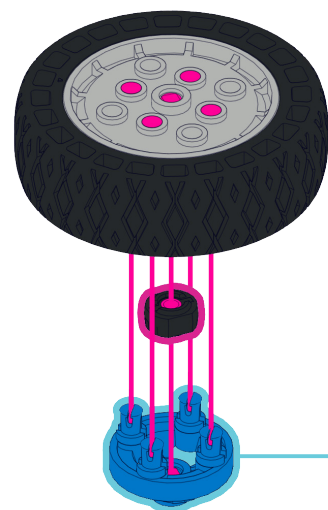
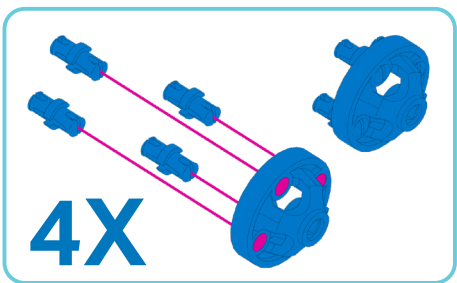


x2

7

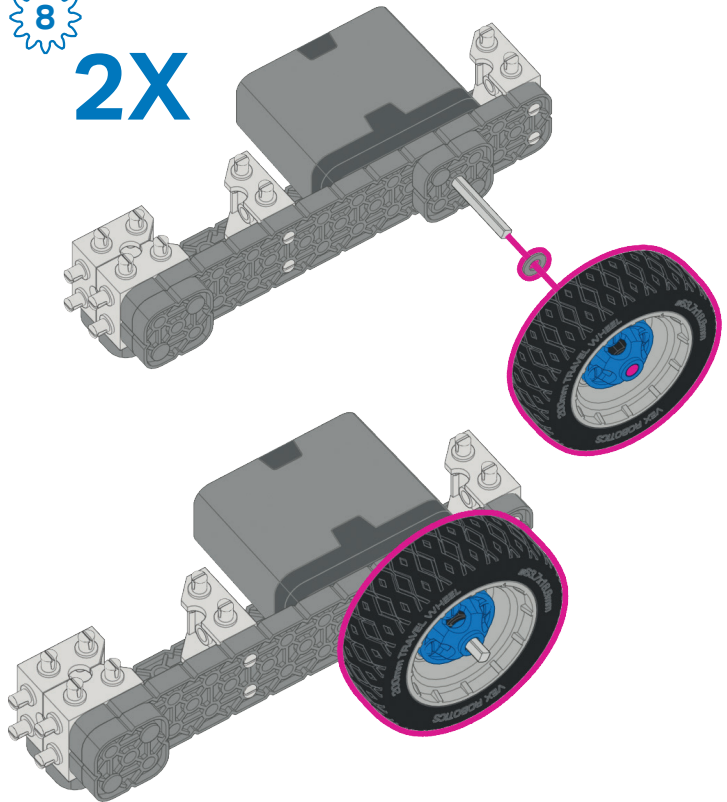
2X

4X

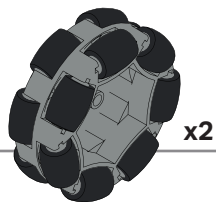


8

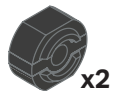
2X



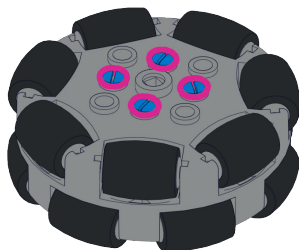
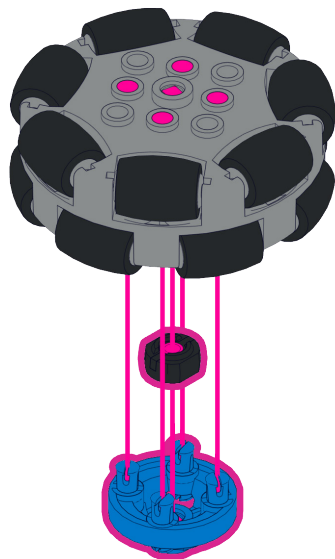
9 2X



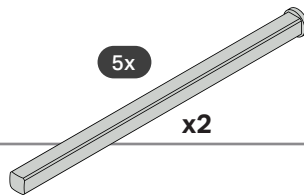
x2



x2

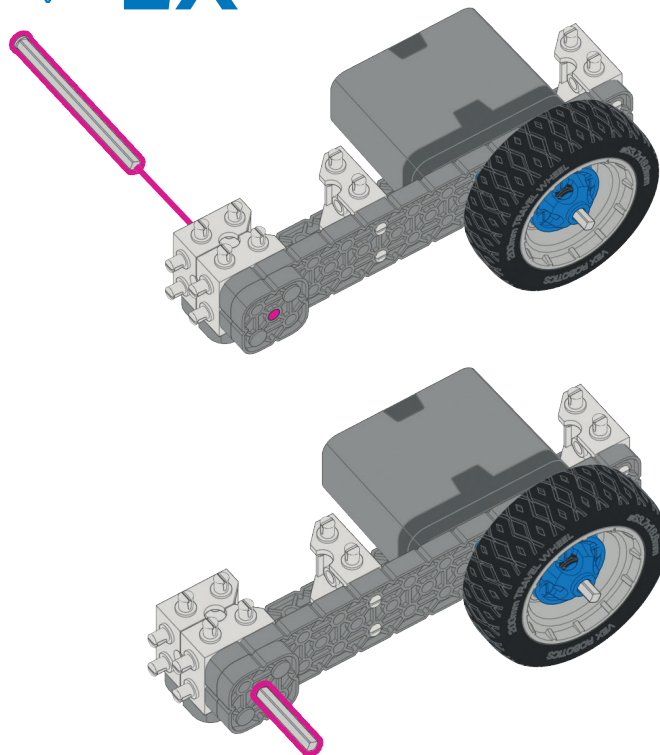


10 2X



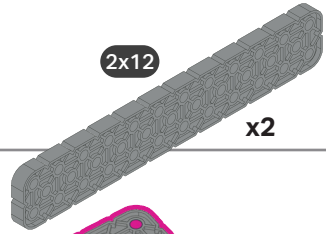
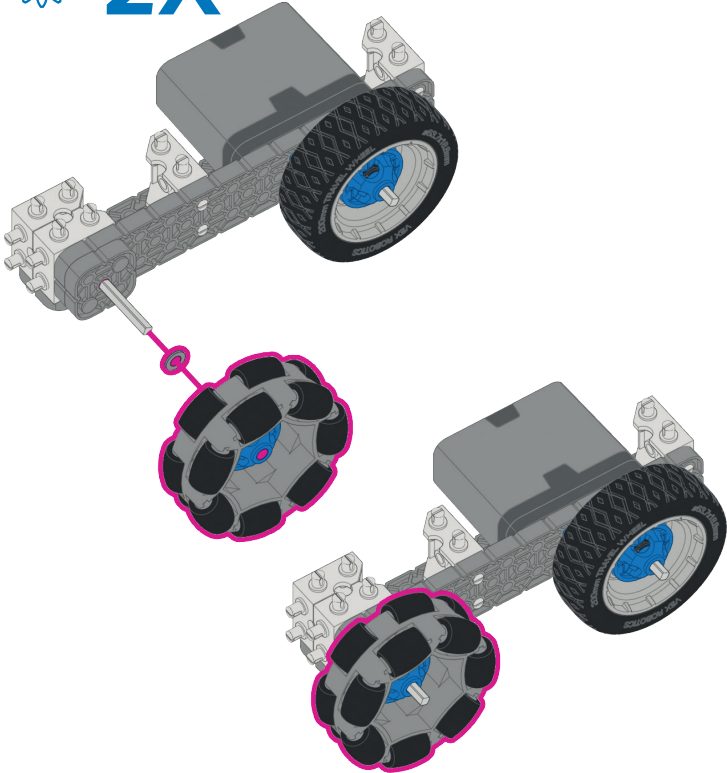
5x

x2

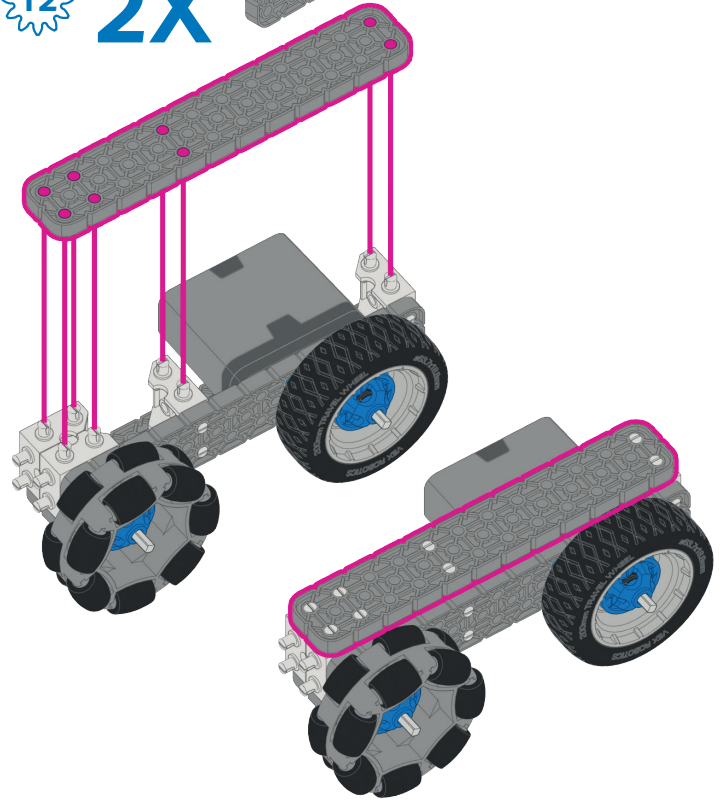




11 2X



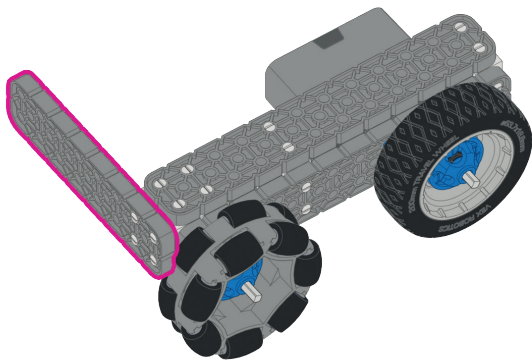
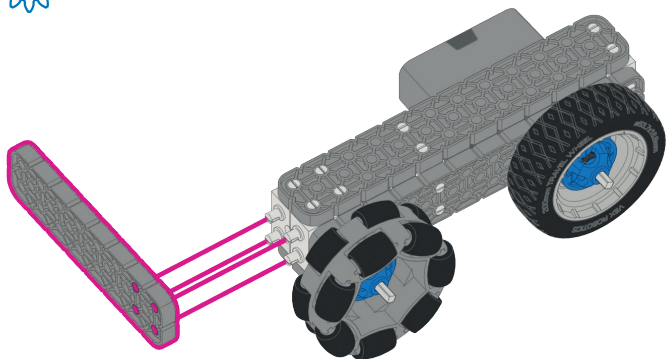
12 2X



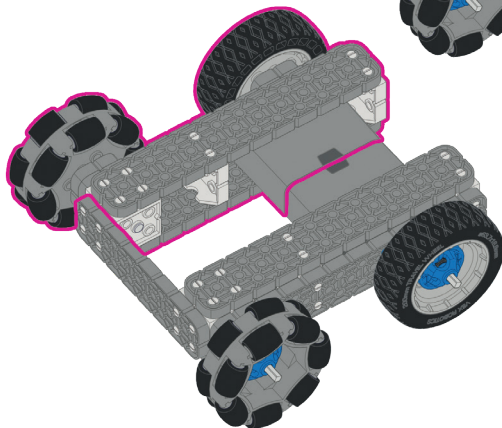
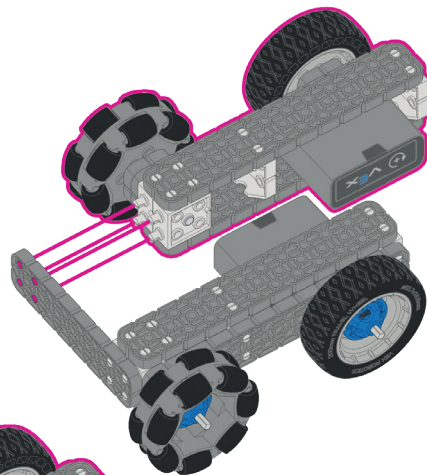
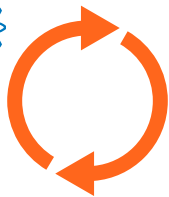
2x8

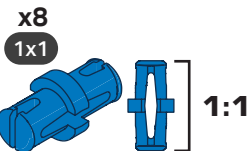
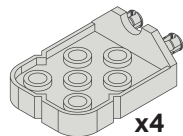
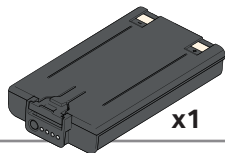
x1

13

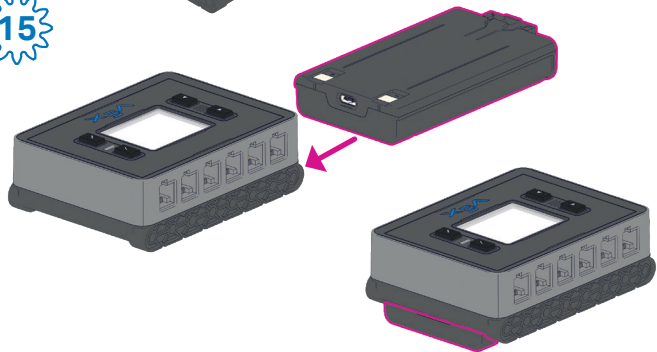


14

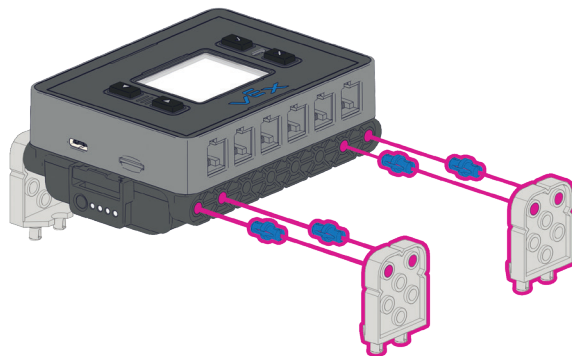




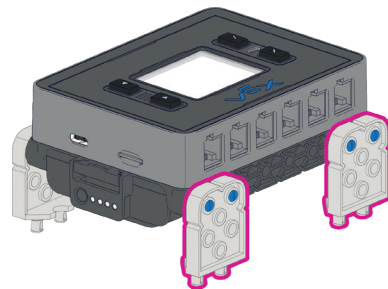
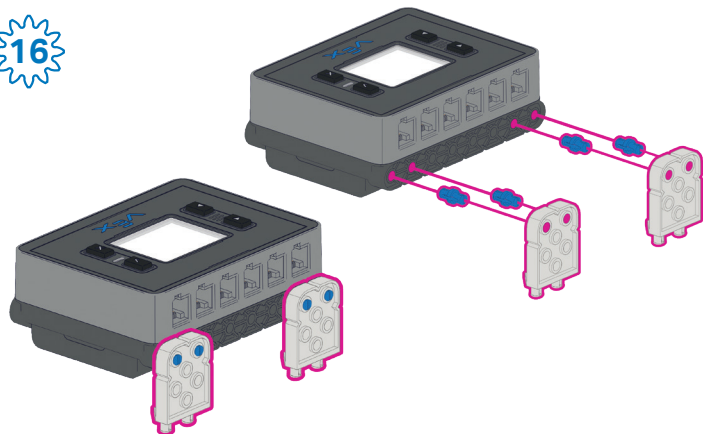
15

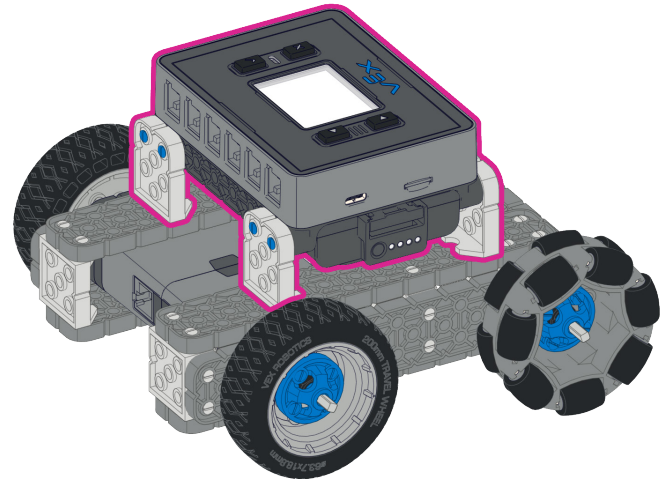
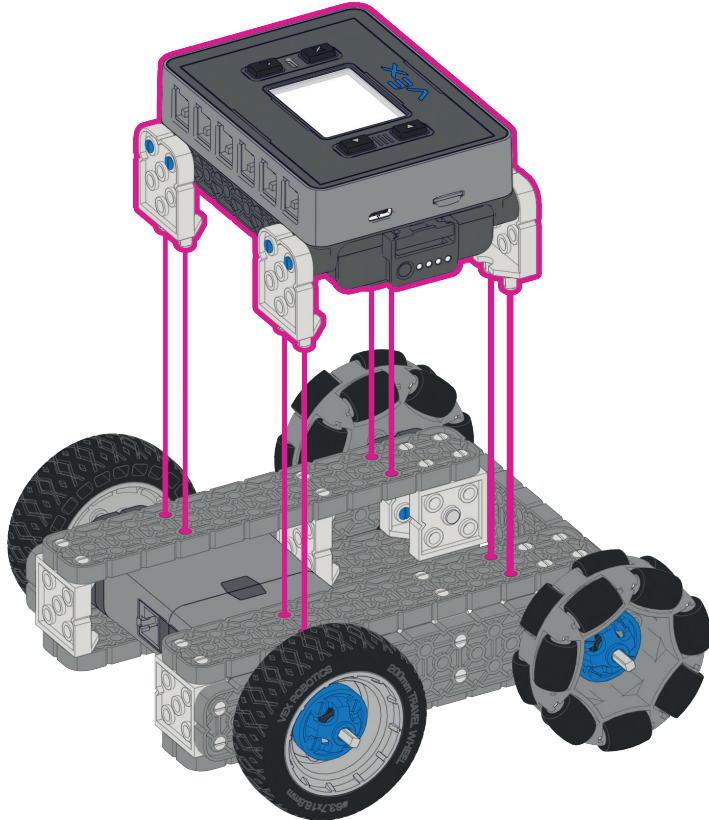


17

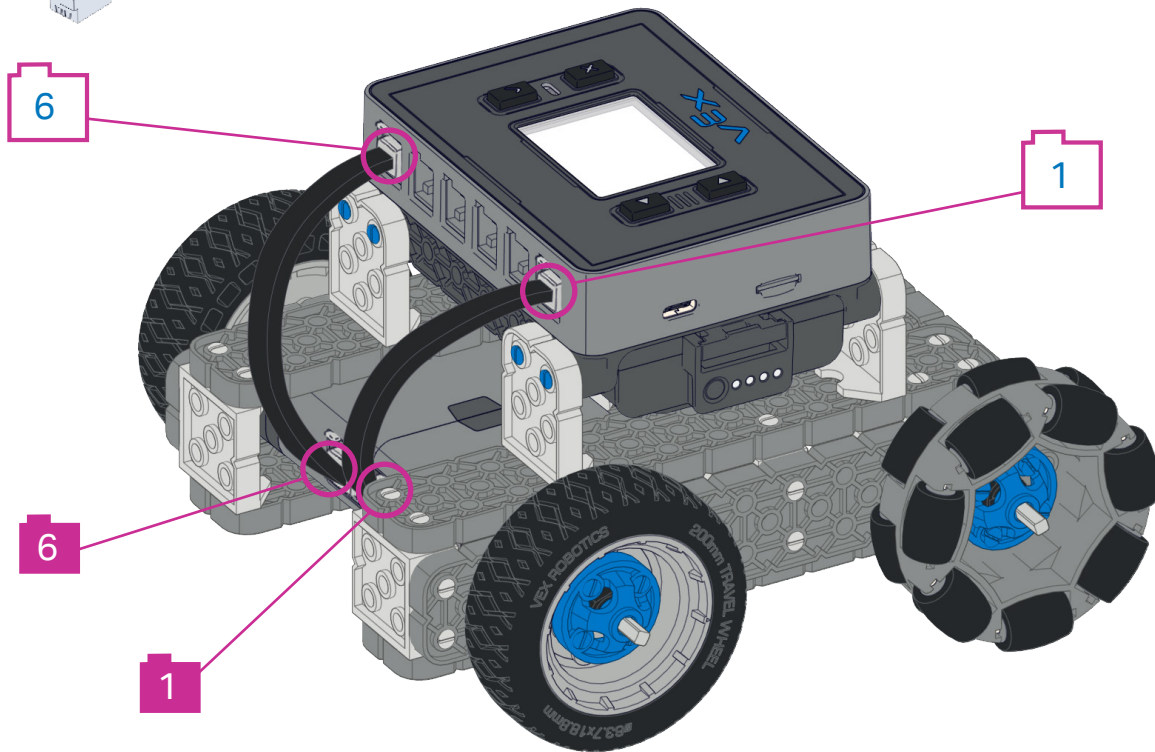
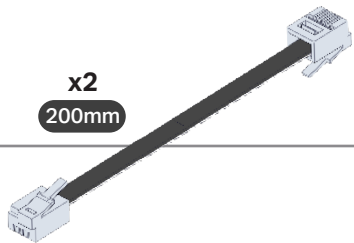


16

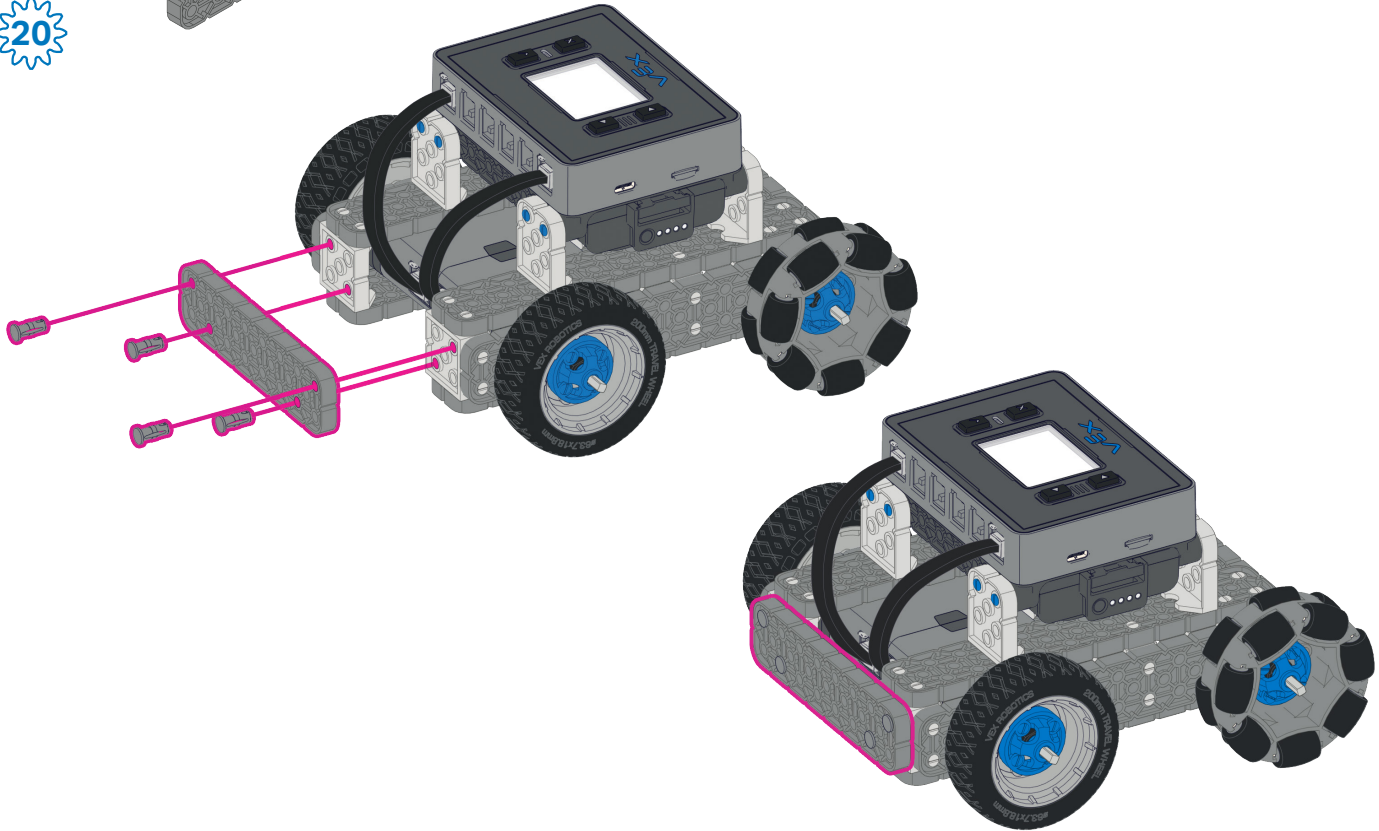
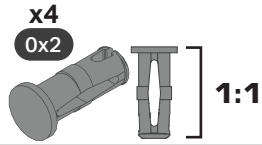
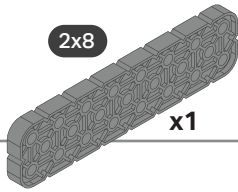




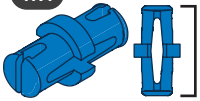
19



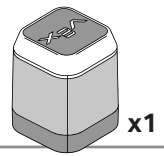
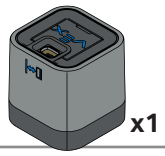
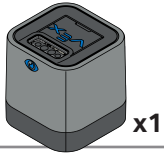
20



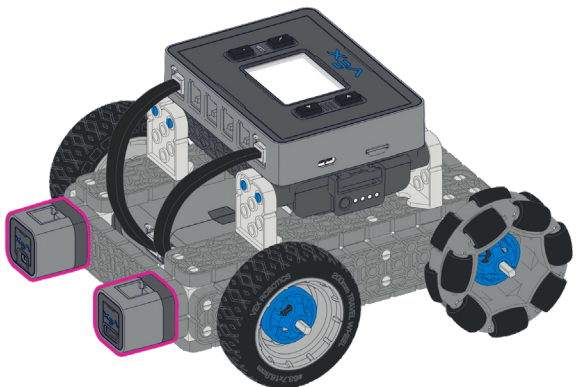
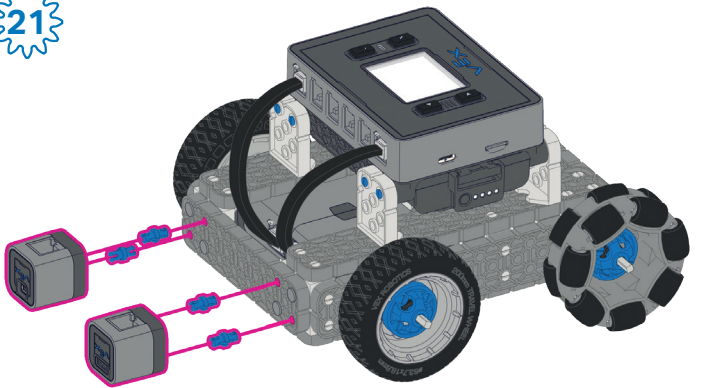
x6
1x1



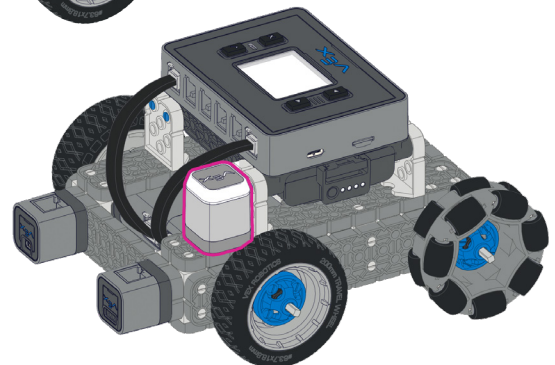
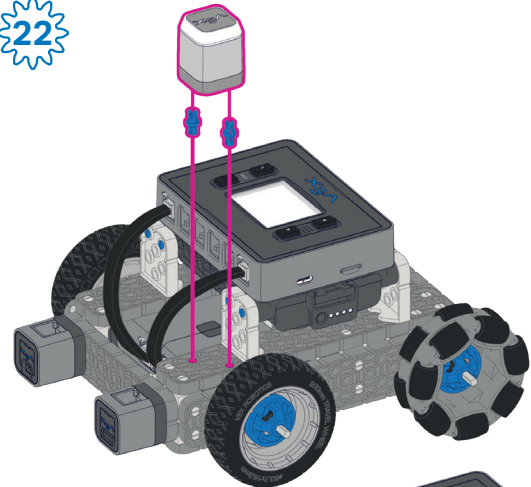
1:1



21



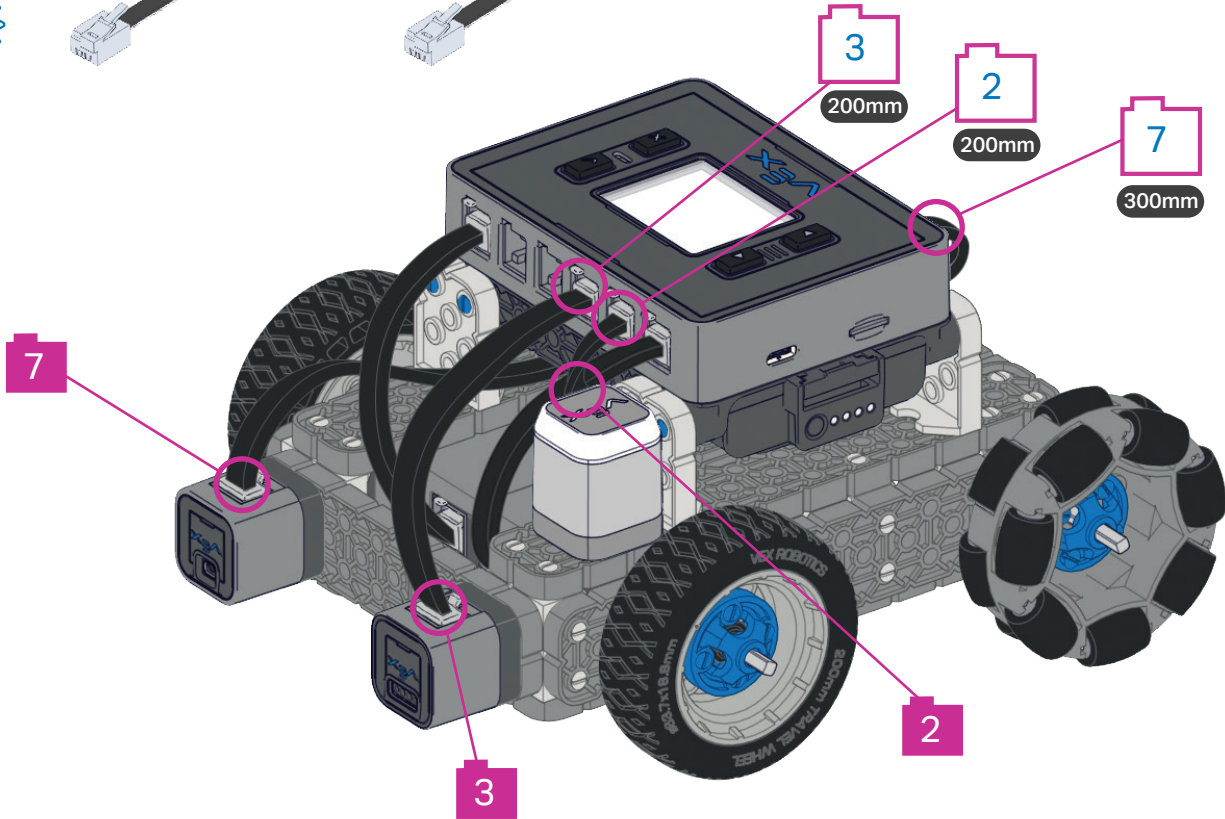
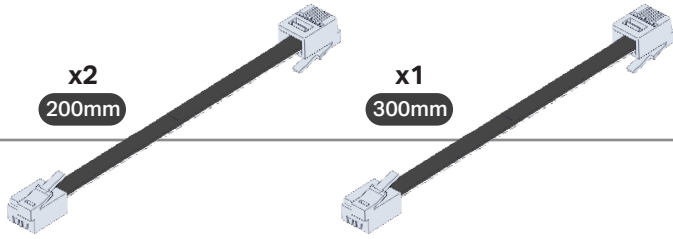
22

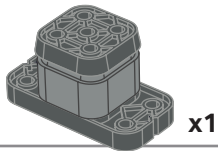


23

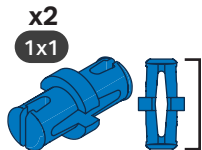
x2
200mm

x1
300mm





x1

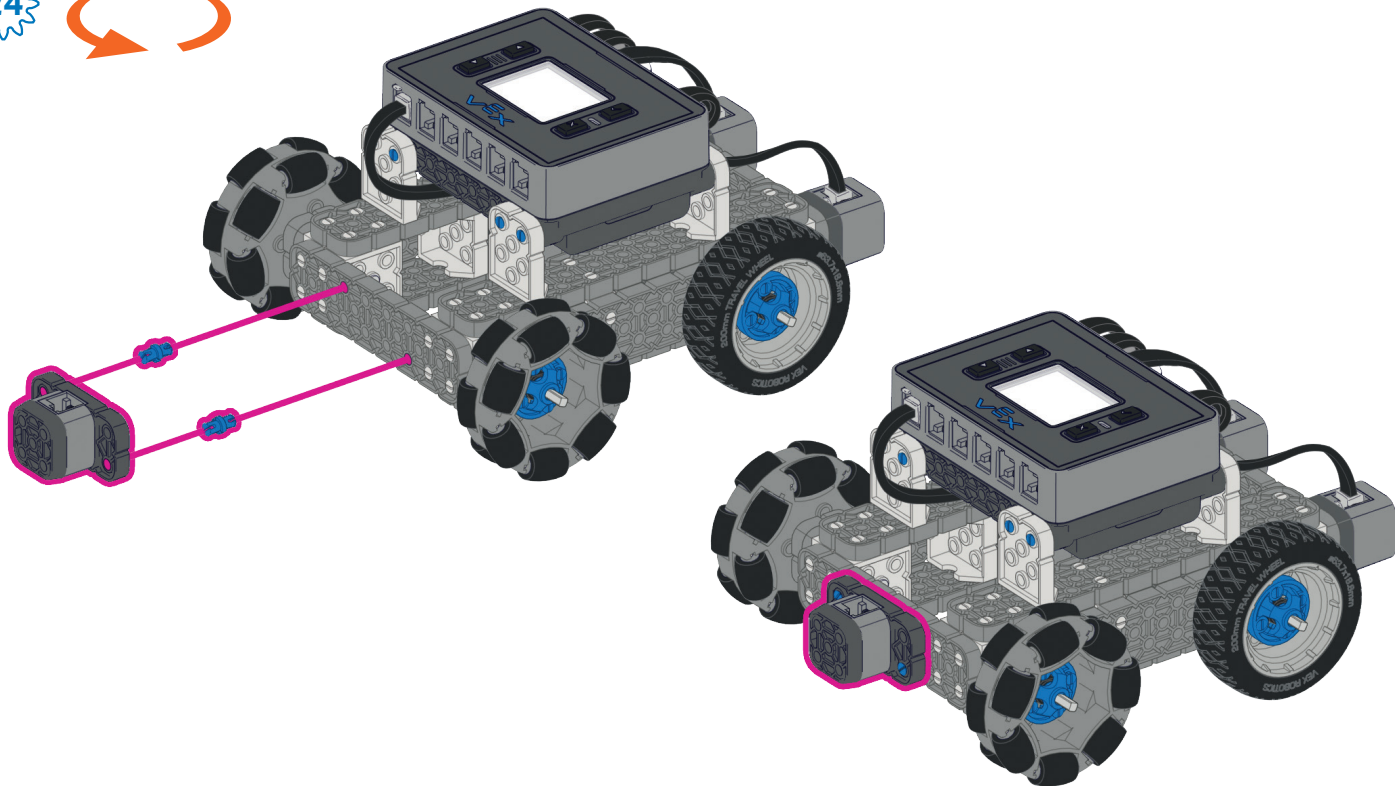


x2

1x1

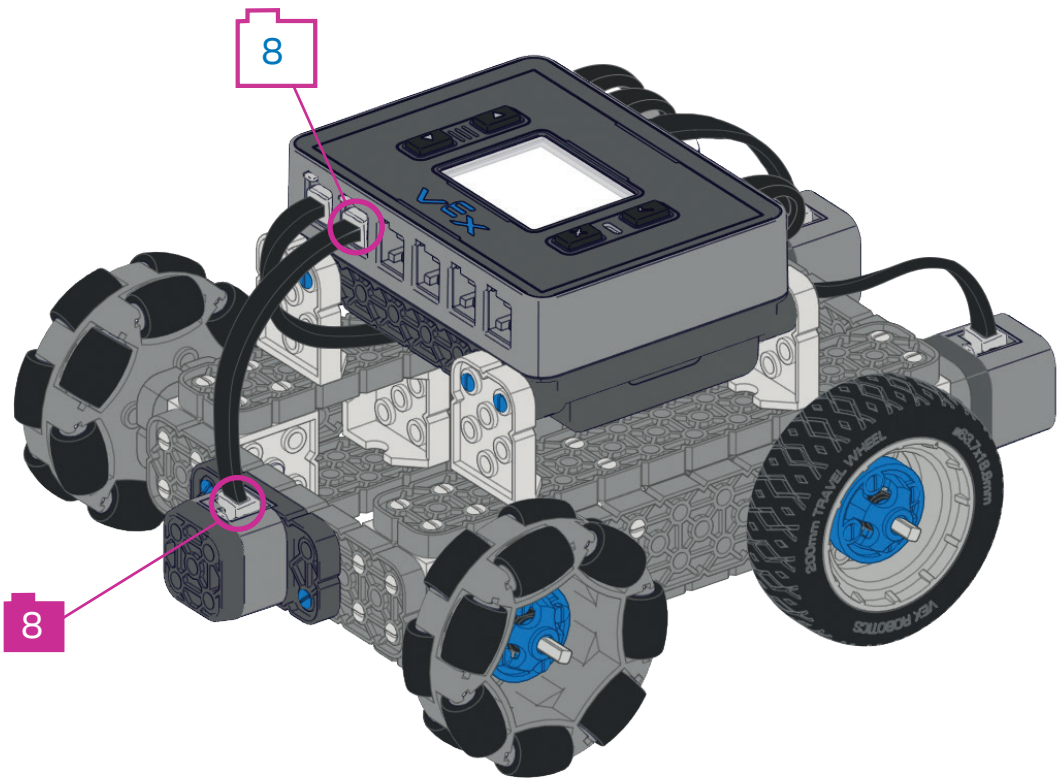
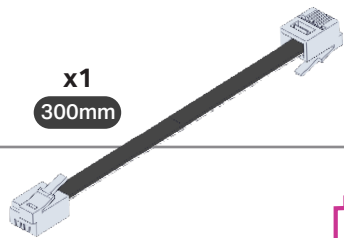
1:1

24



25

x1
300mm



BaseBot with Sensors Build Instructions

228-8899 Rev13



Custom manufactured in China for Innovation First Trading SARL. Distributed in the U.S.A, Mexico, Caribbean, Central & South America by VEX Robotics, Inc., 6725 W. FM 1570, Greenville, TX 75402, U.S.A. Distributed in China by Innovation First International (Shenzhen), Ltd., Suite 1906, Excellence Tower, 98 Fuhua Yi Road, Futian, Shenzhen, Guangdong, China.518048. Distributed in other regions by Innovation First Trading SARL, Z.A.E. Wolser G, 315, 3434 – Dudelange, Luxembourg +352 27 86 04 87. Distributed in Canada by / Distribué au Canada par / Innovation First Trading, LLC, 6725 W. FM 1570, Greenville, TX 75402, U.S.A.